



Patio Friendly Pollinator Garden

What are native plants?

Native plants are defined as species that occur naturally (without human introduction) in an area

Why should I plant native plants?

Native plants are well adapted to local climates, so they require less water, are more resistant to local weather conditions than nonnatives, and usually don't require fertilizer if planted in the ground. Pollinators need flowering plants to survive, and some pollinators (like native bees) prefer native plants. Native plants also create habitat and food for birds and insects by providing shelter and seeds. Beyond ecological benefits, gardening reduces stress, facilitates social connection, and improves motivation.

Where can I find native plants?

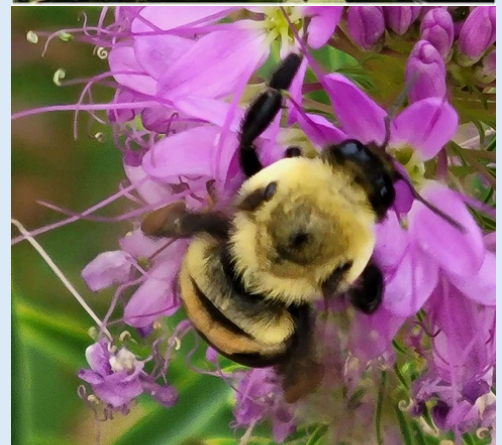
To get native plants, you can collect seeds, or purchase seeds, seedlings, or established plants. Make sure to check regulations before harvesting plants and seeds from your local area. Many local nurseries have native seed, seedlings, and established plant collections.

Why patio friendly?

You don't need to own your home in order to provide homes and food for our local pollinators! A patio garden for bees, birds, beetles, and other pollinators can be accessible for anyone with any amount of space!

Needed Supplies

- Containers
- Dirt
- Sunlight
- Water
- Time and attention!





Arrowleaf Balsamroot

- Bright yellow blooms in early and mid spring provide food for birds
- Seeds require stratification - so place in shallow containers with gravel throughout the fall and winter before planting
- Requires large, deep pots at least 1 foot deep
- Drought resistant, water only once every 10 days

Mountain Columbine

- Attracts hummingbirds, as well as other birds
- Plant in containers with a diameter of at least 12 inches
- Require drainage, prefers soil to dry before watering again
- Grows best in partial sun



Rocky Mountain Beeplant

- As the name suggests, a favorite food source for bees!
- In containers requires drainage and will tolerate drought
- Prefers full sun
- Long-lasting blooms make Beeplant a great additional to a patio garden

Showy Milkweed

- Provides the only food source for Monarch Butterfly Caterpillars
- Will survive in poor soil but requires drainage
- Prefers full sun
- Will tolerate some drought, but in containers requires regular watering



Goldenrod

- Provides a great fall food source for pollinators!
- Plant in a large container of at least 12" diameter with large drainage holes
- Prefers full or partial sun
- Unlike wild goldenrod, in containers goldenrod requires regular watering

Other Ways to Create a Pollinator Friendly Patio

- Create an insect hotel!
- Provide a food, water, and shelter for birds and bees
- Avoid pesticide and herbicide use
- Wait to mow or rake your lawn until May

