



IDAHO
CONSERVATION
LEAGUE



Most Sewage Treatment Plants in Idaho Are Not Making the Grade



During 2015–2017, There Were 1,742 Violations of the Clean Water Act

2nd Annual Report

Most Sewage Treatment Plants in Idaho Are Not Making the Grade

During 2015–2017, There Were 1,742 Violations of the Clean Water Act

2nd Annual Report
Reviewing Years 2015 through 2017

Copyright © 2018 by the Idaho Conservation League

Justin Hayes, Program Director
Idaho Conservation League
PO Box 844
Boise, ID 83701

www.idahoconservation.org
208.345.6933

Cover photos:

Family rafting, John Robison
Fish, Brad Smith
Fishing, Mark Lisk
Moose, Jay Krajic
Bald eagle, Marjolein Groot Nibbelink

INTRODUCTION

The Idaho Conservation League (ICL) is Idaho's leading voice for conservation. With offices in Boise, Ketchum, and Sandpoint, we work to protect the air you breathe, the water you drink and the wild places you and your family love.

ICL's water program is actively involved in all aspects of water quality protection in Idaho. We participate in state-led efforts to develop appropriate water quality standards for Idaho's lakes and rivers. We work on policy matters related to how the state manages waterways, regulates pollution and promotes restoration. We also review and participate in the development and issuance of discharge permits issued in Idaho.

Nearly every city in Idaho is located on the banks of a river or lake. Why? Because these waterbodies play a key role in getting rid of a community's sewage. When someone flushes a toilet, the contents do not go straight into the river. This sewage is first processed in the community's wastewater treatment plant. Treated wastewater, also called effluent, is then often discharged to a lake or river. Increasingly, smaller communities are deciding that treating their wastewater and then land-applying it to vegetation is a cost-effective and environmentally preferred strategy. This report reviews only municipalities that have discharge permits and retain the option of discharging to local waterbodies.

Wastewater treatment plants must receive permits prior to discharging wastewater. These permits, which are unique to each facility, guide operations and limit pollutants in the treated wastewater discharged to receiving lakes or streams. To protect water quality, the U.S. Environmental Protection Agency (EPA) tracks compliance with these permits that discharge to waterbodies. Results are available online.

The mission of the Idaho Conservation League, a statewide conservation organization, is to protect Idaho's environment — and clean water is a large part of our focus. Through our work, we talk to state and federal regulatory agency staff, as well as to Idaho citizens who fish and recreate in our lakes and streams.

We are concerned that many Idahoans may not know what it takes to protect our state's waterbodies; they may not understand wastewater discharge permits or know how well their communities' treatment plants are operating. To make this issue more accessible to the public, we reviewed the permits and all available discharge and monitoring reports and assessed whether wastewater treatment plants across Idaho were complying with their permits.

Most Sewage Treatment Plants in Idaho Are Not Making the Grade

This report, which is the second annual report, provides background on the discharge permits and summarizes our findings for a three-year period (January 2015 through December 2017). Our hope is that, as Idahoans learn more about what wastewater discharge permits are, how they guide operations and limit pollutants, and whether their communities' wastewater treatment plants are complying with their permits, cities will feel pressure to do a better job operating their facilities. We encourage concerned citizens to contact their city government to learn more or provide feedback.



Clean water is important to Idahoans who fish and recreate in our lakes and streams. / Justin Hayes

WASTEWATER TREATMENT PLANTS AND PERMITS

Municipal wastewater treatment plants play a critical role in protecting water quality — keeping our rivers and lakes fishable and swimmable. These treatment plants come in all shapes and sizes. Generally speaking, bigger cities like Boise have facilities capable of treating larger daily inflows of sewage. These larger wastewater treatment plants rely on more advanced mechanical and biological treatment. Smaller cities use scaled-down versions that may be less complex. Smaller towns may use even less complicated lagoon systems.



The Nampa wastewater treatment plant is an example of a large facility with mechanical and biological treatment. / Google Earth



The Inkom wastewater treatment plant is an example of a small lagoon-based facility. / Google Earth



The Driggs wastewater treatment plant is an example of a larger lagoon system with some additional technical aspects. / Google Earth

Regardless of a community's size or the amount of sewage that its treatment plant must process, the bottom line is the same: these facilities must effectively treat sewage so that it can be safely discharged to a local waterbody.

Each treatment plant has a unique discharge permit that outlines how the facility is operated, limits the amount of pollution that the facility can discharge to a nearby lake or stream, and guides how and when the pollutants are measured.

Who Issues and Monitors Discharge Permits?

Permits for these facilities are required under the Clean Water Act and authorized through the National Pollutant Discharge Elimination System (NPDES). These permits are often referred to as NPDES permits or discharge permits. In Idaho, the EPA has historically issued these permits. However, this role is shifting to the Idaho Department of Environmental Quality. Current EPA-issued permits will stay in effect until they expire and are replaced by permits from the Idaho Department of Environmental Quality. These new permits will be called Idaho Pollutant Discharge Elimination System (IPDES) permits.

Every wastewater treatment plant is different. Similarly, discharge permits also differ from facility to facility. Each permit is developed using water quality data and other metrics to ensure protection of the health of the lake or stream receiving the treated sewage, the aquatic life in that waterbody, the health of people who recreate in the water, and the water supply of downstream communities.

The EPA maintains an online database of all current discharge permits issued in the state of Idaho. Complete copies of these permits and supporting documents can be found at the following website:

www.epa.gov/npdes-permits/idaho-npdes-permits.

Each wastewater treatment facility is charged with monitoring the pollutants regulated by its permit and reporting results (often analyzed by independent labs to ensure integrity) to the EPA.

What Pollutants Are Covered in Discharge Permits?

Discharge permits regulate what can and cannot be discharged; they also contain limits on how much of a particular pollutant can be discharged on a daily, weekly or monthly basis. These limits cover a variety of pollutants that can harm human health, fish and other aquatic life in the waterbody.

For example, limits are required for pollutants like coliform bacteria. Most people are familiar with the bacterium *Escherichia coli*, better known as *E. coli*. This pollutant comes from fecal contamination and can cause serious diseases, making it unsafe for people to swim and play downstream of a facility that is not complying with its coliform bacteria limit.

Limits are also frequently required for phosphorus. Too much phosphorus in a waterbody acts as a fertilizer and can cause excessive amounts of algae and aquatic weed growth. When these aquatic plants die and decompose, they can consume oxygen from the water. The resulting low oxygen levels harm fisheries. Phosphorus and other nutrients can also lead to toxic algal blooms that can kill fish, livestock and pets and sicken humans.

Most Sewage Treatment Plants in Idaho Are Not Making the Grade



Aquatic weed growth in Boyer Slough, into which the effluent from the Kootenai-Ponderay wastewater treatment plant discharges. / Justin Hayes

Permits may also contain limits on pollutants such as mercury, lead, copper and other toxic metals and chemicals to help protect fish and ensure that anglers can safely eat the fish they catch. Other pollutants like chlorine and ammonia are toxic to fish and can kill them outright if levels become too high.

While a permit may contain limits on any number of pollutants, several pollutants account for the vast majority of violations at municipal wastewater treatment plants (Table 1).

Table 1 *Pollutants most often exceeded at wastewater treatment plants and a description of each.*

| Pollutant | Explanation |
|---------------------------------|---|
| Ammonia | High levels of ammonia in water can kill aquatic organisms. |
| BOD (biochemical oxygen demand) | BOD is a surrogate of the degree of organic pollution in effluent. As this material decomposes, it can deplete oxygen from the waterbody. |
| Chlorine | Chlorine, which is added during wastewater treatment to kill harmful microorganisms, is toxic to aquatic life. |

Most Sewage Treatment Plants in Idaho Are Not Making the Grade

| Pollutant | Explanation |
|-------------------------|--|
| Coliform, fecal general | Coliform bacteria are a type of bacteria that comes from human or animal waste and can cause gastrointestinal upset, fever, abdominal cramps and diarrhea. |
| <i>E. coli</i> | <i>Escherichia coli</i> is a type of fecal coliform commonly found in animal and human waste. Some strains of <i>E. coli</i> can cause severe illness and death. |
| pH | This numeric scale expresses the acidity or alkalinity of a substance. A pH range of 6.0 to 9.0 is necessary to protect aquatic life in fresh water. |
| Phosphorus | Phosphorus can cause excessive algae and aquatic plant growth, which in turn can deplete oxygen from the waterbody. |
| Solids, total suspended | Total suspended solids include sediment and other fine-grained particles. |

What If Treatment Plants Violate Their Permits?

If a community's wastewater treatment plant fails to comply with pollutant limits in its permit, that facility can endanger human health and harm water quality. Failure to operate a wastewater treatment plant properly is not only bad for people who rely on a waterbody for drinking water, irrigation, recreation and fisheries, but it is also against the law.

Permit violations can lead to penalties. Because the health and environmental implications of these violations can be so dire, consequences to a municipality that violates its NPDES permit can be equally dire. The Clean Water Act provides for penalties of up to \$51,570 per violation per day.

Although the EPA issues these discharge permits, the Clean Water Act enables ordinary citizens to pursue enforcement action in court. In fact, because of this provision, ICL frequently takes enforcement actions when we observe that a facility is polluting a lake or stream by violating its discharge permit.

ICL'S REVIEW OF DATA

Individual facilities monitor their discharges and report this data to the EPA in accordance with the monitoring requirements in their permits. Typically, a facility must sample and analyze its wastewater discharge every week. This means that a month generally has four separate, consecutive data-collection periods in it. A few pollutants may be monitored continuously, while others require only monthly sampling.

What Data Did ICL Review?

We accessed the data collected and reported by each facility and used this data to compile our report. ICL did not collect this data in the field.

We reviewed discharge data for all 114 municipal wastewater treatment plants with NPDES permits. This data covered the last three years (January 2015 through December 2017), and we accessed the information at the EPA's Enforcement and Compliance History Online website: echo.epa.gov.

This website is a searchable database of all the facilities in the United States that are permitted to discharge pollution to water or air. Information about individual facilities can be found by clicking the Explore Facilities tab and searching for facilities in Idaho or a specific community.

How Did We Determine Violations?

Discharge violations occur when a facility fails to meet its permit limit for an individual pollutant during a single sampling period. For instance, if a facility exceeds its limits for both phosphorus and *E. coli* during a single sampling period (one week), two separate discharge violations are reported, one for each infraction. If exceedences continue for a second effluent sampling period, the record shows a total of four violations.

In our review, we tallied only discharge violations. Permit violations not related to discharge — such as those related to operating conditions; reporting, maintenance and compliance schedules; or recordkeeping requirements — were not integrated into our grading framework, even though they are enforceable violations. We focused solely on discharge violations because these are the sorts of violations that cause immediate impacts to water quality and they are the easiest to explain to the public.

Compliance with permit limits is either pass or fail. The Clean Water Act contains no provision for a minor violation or forgiveness for barely or infrequently violating a permit limit. Exceeding a limit by 50%, 10% or just 1% is treated the same — it is a violation of the permit condition and thus a violation of the Clean Water Act.

Most Sewage Treatment Plants in Idaho Are Not Making the Grade

Facilities with no discharge violations received a passing grade. Facilities with violations received a failing grade.

Though it is standard to do so when calculating a penalty an enforcement action, for our assessment, we did not multiply each discharge violation by the number of days in a sampling period. For example, using this standard approach, a discharge violation documented in a weekly sampling period would normally be multiplied by 7. Therefore, a single limit exceedence is recognized as a daily violation for every day of the sampling period and penalties are calculated accordingly. But for this report, we did not use the multiplier because we wanted to present the municipalities with their own data in the form that they reported it to the EPA.

RESULTS OF ICL'S REVIEW

How Many Facilities Passed? How Many Failed?

In Idaho, 114 municipal wastewater treatment plants have NPDES permits. Our review showed that only 20 of the municipal wastewater treatment plants (17.5%) had no violations. These 20 facilities received a passing grade (Figure 1). The remaining 94 municipal wastewater facilities (82.5%) violated their permit limits and thus received a failing grade.

Appendix I lists all 114 municipal wastewater treatment plants in Idaho and the number of discharge violations, if any, during the three-year period of our review.



Figure 1. Percentage of the 114 wastewater treatment plans receiving a passing or failing grade, January 2015 through December 2017.

Who Got a Passing Grade?

Twenty cities reported zero discharge violations during the three-year period of our review. Of these, 17 had received a passing grade for the 2014–2016 period that we reviewed and reported on last year. Three

facilities — Lava Hot Springs, Lewiston and Rockland — improved their grades from fail for the 2014–2016 period to pass in our review of the 2015–2017 period.

Communities with No Discharge Violations for 2015–2017

- Carey
- Cascade
- Dover
- Emida
- Filer
- Georgetown
- Grace
- Kootenai-Ponderay
- Lava Hot Springs
- Lewiston
- McCall
- Mountain Home
- New Plymouth
- Nez Perce Tribe — Lapwai Valley
- Payette
- Riggins
- Roberts
- Rockland
- Star
- Viola

Achieving 100% compliance with one's NPDES permit is not an accident. These communities deserve praise for prioritizing clean water.

Who Got a Failing Grade?

Our review found that 94 facilities had violated their NPDES permits during the last three years, earning them a failing grade. In total, these facilities reported 1,742 discharge violations over the three-year period from January 2015, through December 2017.

However, the data revealed huge variability among facilities with regard to the frequency of violations. Most of the facilities that violated their NPDES permits reported fewer than 10 violations over the last three years (Figure 2). At the other end of the spectrum, several facilities reported that they had violated their permits more than 100 times. Clearly, there are gradations of failing — and some facilities are failing very badly.

Most Sewage Treatment Plants in Idaho Are Not Making the Grade

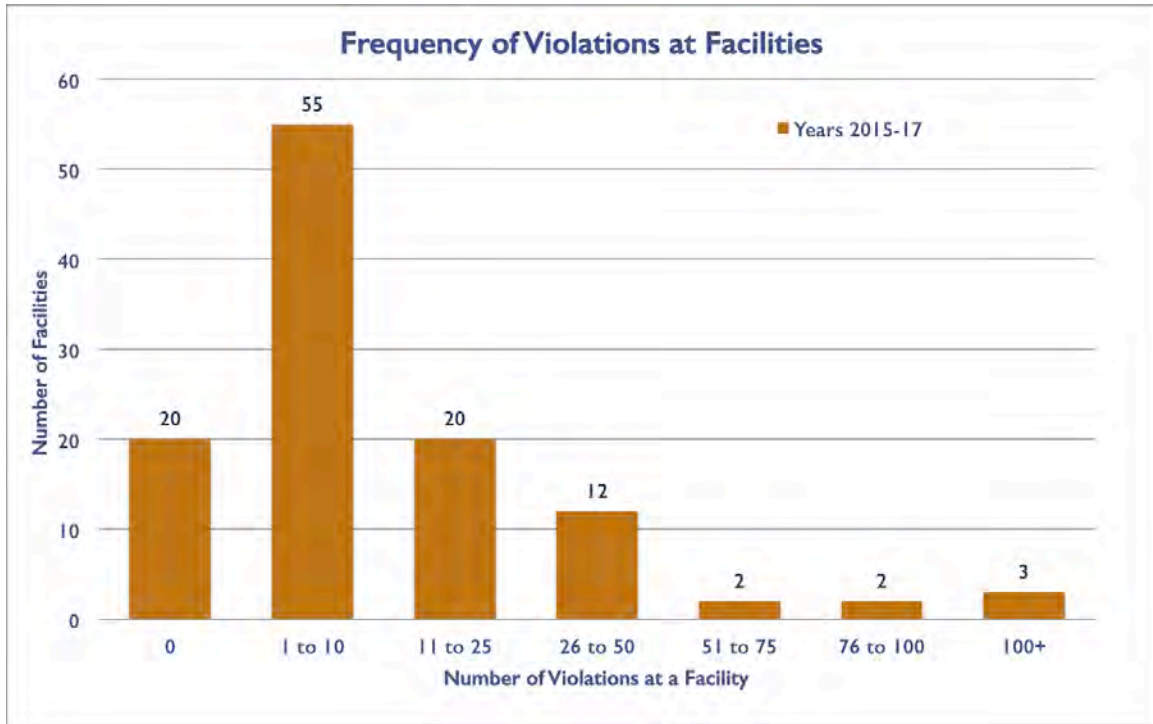


Figure 2. *Number of municipal wastewater treatment plants in Idaho with the associated number of violations, January 2015, through December 2017.*

And as shown in the map, cities and towns, big and small, and distributed all across Idaho have experienced violations (Figure 3).

Most Sewage Treatment Plants in Idaho Are Not Making the Grade

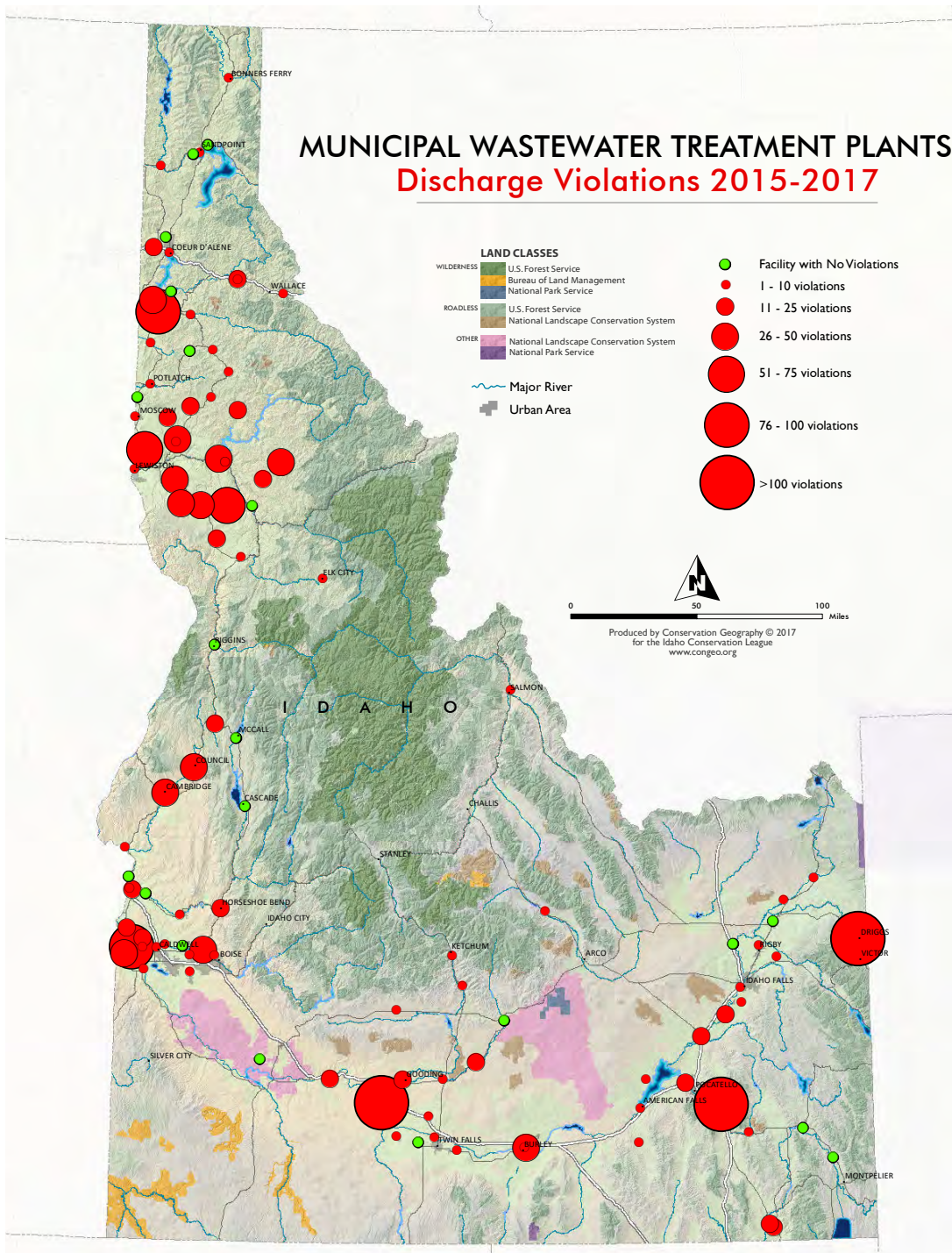


Figure 3. Map of violations with relative size indicating frequency of violations.

What Are the 10 Worst Facilities in Idaho?

While no violations are acceptable, some of Idaho’s municipal wastewater treatment plants are failing much worse than others. Indeed, a small subset of the 114 municipal facilities spread across Idaho is responsible for a hugely disproportionate number of the violations. Just 10 facilities accounted for nearly half (48.7%) of all of the violations that occurred statewide (Figures 4 and 5). The worst performing facilities in Idaho clearly have some significant structural or operational problems that must be addressed.

Amazingly, Inkom, the single worst performing facility in the state, is responsible for 11% of all violations in the state.

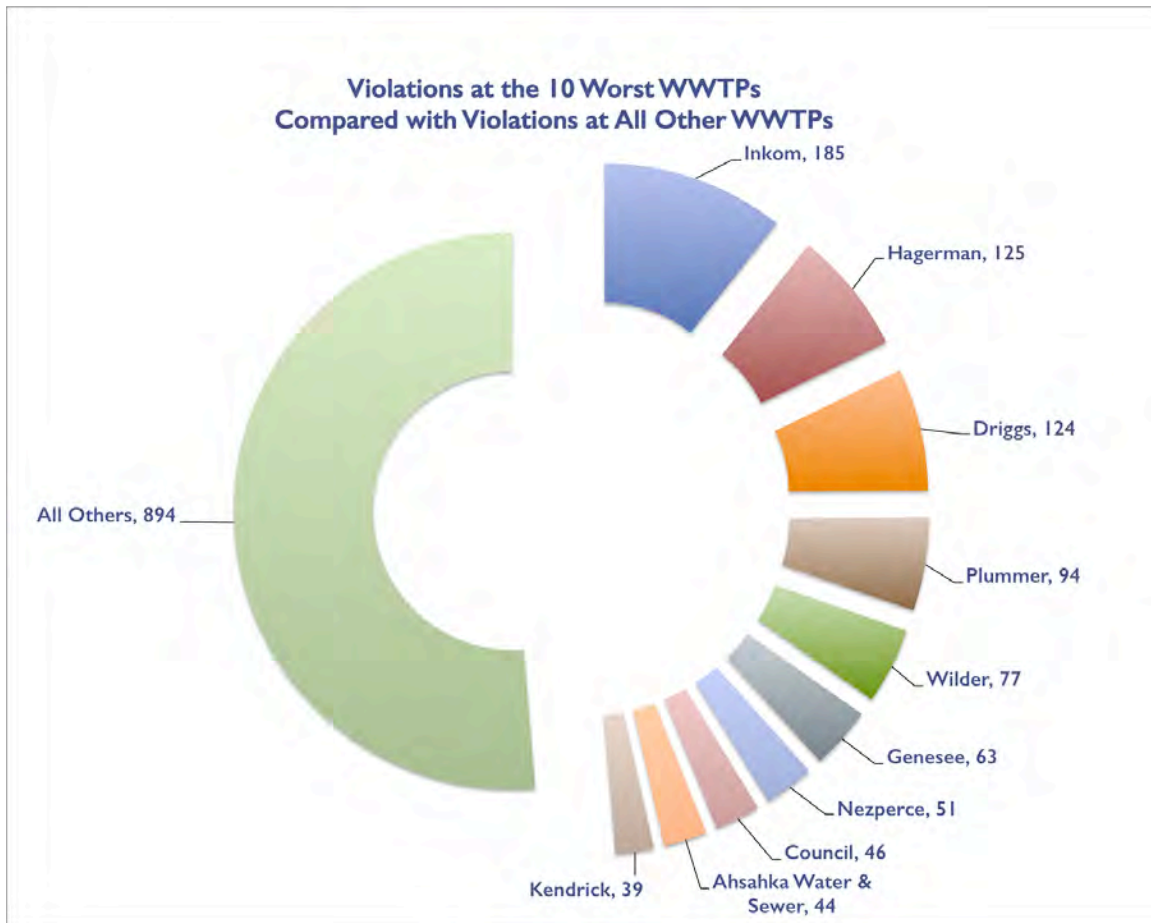


Figure 4. The 10 worst performing facilities have nearly half the violations in the entire state.

Most Sewage Treatment Plants in Idaho Are Not Making the Grade



Figure 5. The number of violations at each of the 10 worst facilities in Idaho.

While the map of municipal wastewater treatment plants (Figure 3) showed that violations occurred all across the state at big and small facilities in both urban and rural settings, the same is not true of the 10 worst facilities (Figure 6). All of the 10 worst performing wastewater treatment plants are located in relatively small rural communities.

What Was the Nature of These Violations?

Data submitted by these 10 facilities demonstrate that they amassed a total of 848 discharge violations from January 2015 through December 2017. These violations were for a variety of pollutants including phosphorus, coliform bacteria, chlorine and excess solids (Table 2). In each of these instances, a facility discharged these pollutants into a lake or stream at levels that violated its permit, placing downstream users, human health and fish at risk.

Most Sewage Treatment Plants in Idaho Are Not Making the Grade

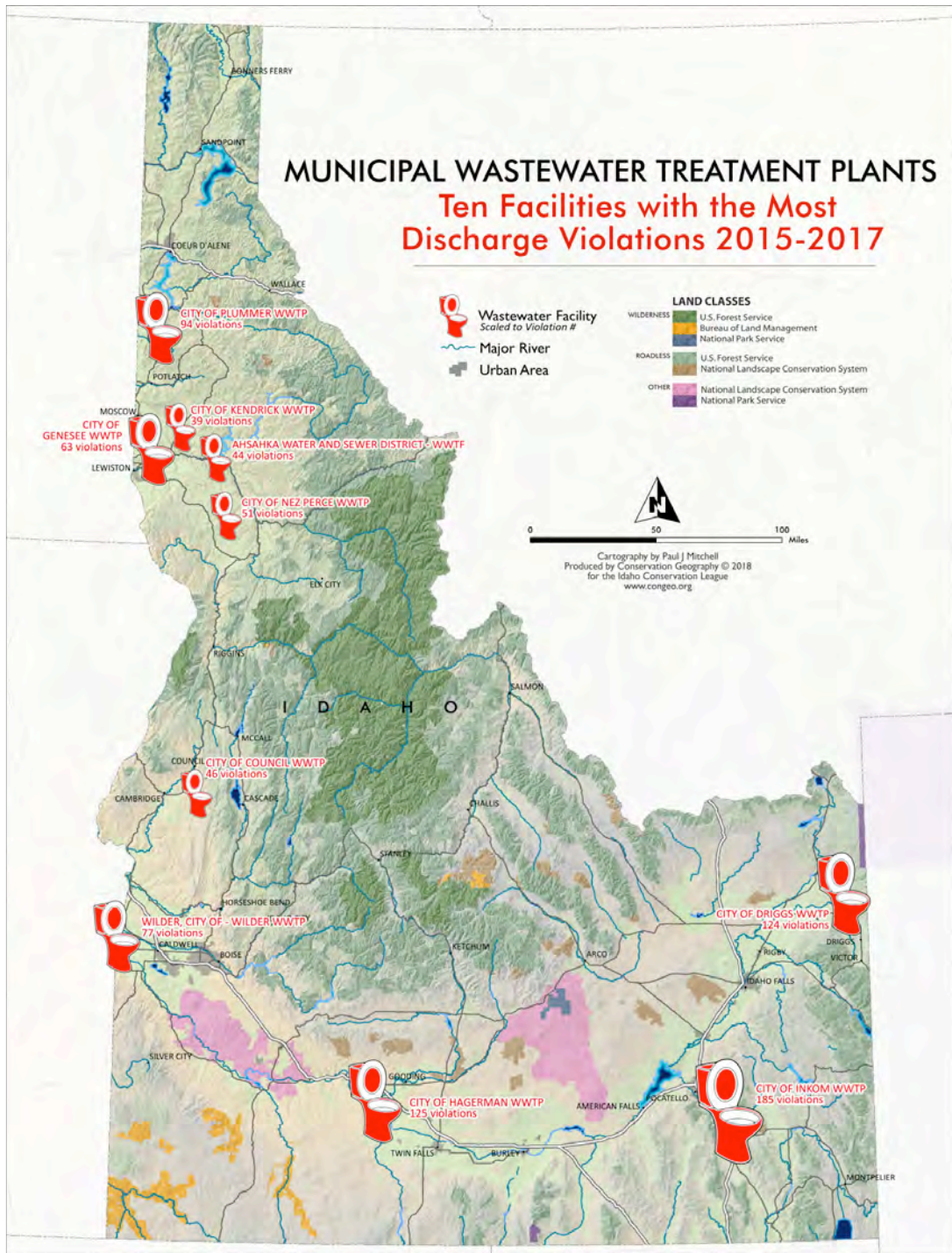


Figure 6. Map showing the location of the 10 worst performing facilities with relative size indicating frequency of violations.

Most Sewage Treatment Plants in Idaho Are Not Making the Grade

Table 2. The 10 worst performing wastewater treatment plants, number of violations, and pollutions leading to the violations, January 2015 through December 2017.

| Facility | Violations | Pollutants |
|-------------------------|------------|--|
| Inkom | 185 | BOD, 5-day, 20 deg. C BOD, 5-day, percent removal Chlorine <i>E. coli</i> Nitrogen Phosphorus Solids, suspended percent removal Solids, total suspended pH |
| Hagerman | 125 | BOD, 5-day, 20 deg. C BOD, 5-day, percent removal Chlorine <i>E. coli</i> Solids, suspended percent removal Solids, total suspended pH |
| Driggs | 124 | Ammonia BOD, 5-day, 20 deg. C <i>E. coli</i> Solids, suspended percent removal |
| Plummer | 94 | Ammonia BOD, 5-day, 20 deg. C BOD, 5-day, percent removal <i>E. coli</i> Phosphorus Solids, suspended percent removal Solids, total suspended pH |
| Wilder | 77 | BOD, 5-day, 20 deg. C BOD, 5-day, percent removal Chlorine <i>E. coli</i> Solids, suspended percent removal Solids, total suspended pH |
| Genesee | 63 | Ammonia BOD, 5-day, 20 deg. C BOD, 5-day, percent removal Chlorine <i>E. coli</i> Solids, suspended percent removal Solids, total suspended pH |
| Nezperce | 51 | BOD, 5-day, 20 deg. C BOD, 5-day, percent removal <i>E. coli</i> Solids, suspended percent removal Solids, total suspended pH |
| Council | 46 | BOD, 5-day, 20 deg. C Chlorine <i>E. coli</i> Solids, suspended percent removal Solids, total suspended |
| Ahsahka Water and Sewer | 44 | Chlorine <i>E. coli</i> |
| Kendrick | 39 | BOD, 5-day, 20 deg. C BOD, 5-day, percent removal Chlorine <i>E. coli</i> Solids, suspended percent removal Solids, total suspended pH |

COMPARISON WITH 2014–2016 VIOLATIONS

This report is our second annual wastewater treatment plant compliance report. Our first report reviewed data for January 2014 through December 2016. The 2014–2016 report is available at bit.ly/2014_2016ICLIIdWastewaterRpt

When comparing results from our first report (2014–2016) and this report (2015–2017), it is important to understand that our reports cover three-year windows that overlap. Therefore, violations that occurred in 2014 are not tallied in the 2015–2017 report. But a violation that occurred in 2015 is documented in both reports.

Overall, it is promising to see that the total number of violations fell from 1,768 for the 2014–2016 period to 1,742 for the 2015–2017 period. Though this reduction is small, it is trending in the proper direction.

Unfortunately, fewer facilities earned a passing grade (22 versus 20) in the 2015–2017 report than did in the prior report. Figure 7 compares the frequency of violations reported at facilities in the 2014–2017 and 2015–2017 review periods.

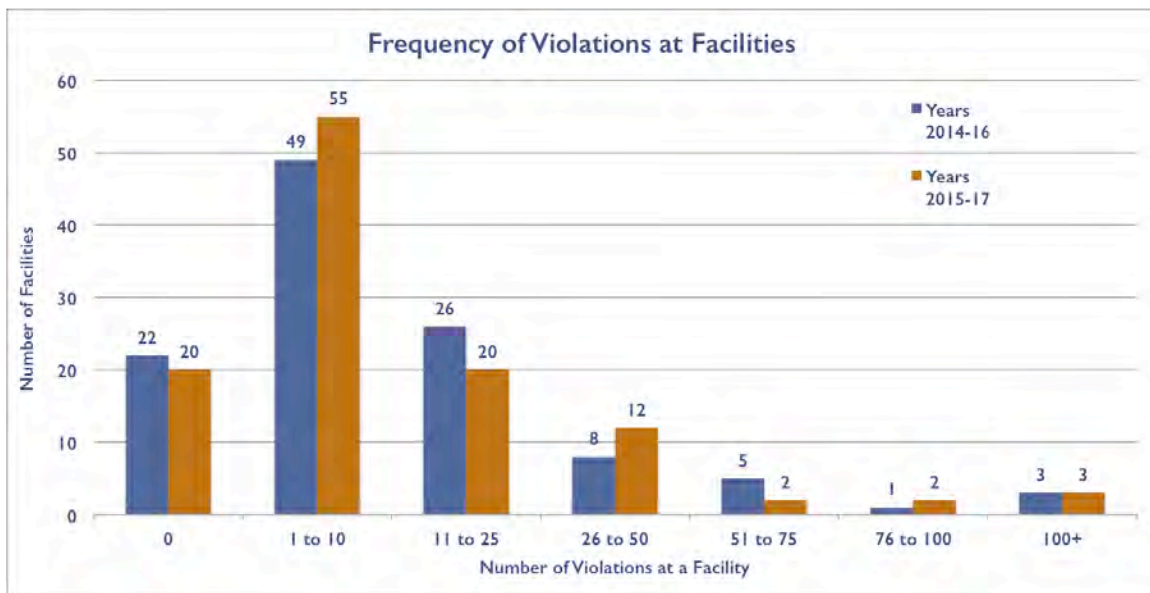


Figure 7. Comparison of frequency of violations at the 114 wastewater treatment plants between the 2014–2016 and the 2015–2017 review periods.

For the most part, facilities that were highlighted as very poor performers in our 2014–2016 report continued to perform poorly in this review. In fact, 7 of the prior 10 worst facilities remained in the 10 worst

Most Sewage Treatment Plants in Idaho Are Not Making the Grade

category for the 2015–2017 report (Table 3). Three facilities joined the ranks of the 10 worst, including Kendrick, which experienced many new violations and moved from the 21st worst performing facility in 2014–2016 to the 10th worst performer in the 2015–2017 period.

Table 3. Ranking and number of violations for the top 10 worst performing wastewater treatment plants for the 2015–2017 period, compared with their ranking and number of violations of these same facilities for the 2014–2016 period.

| 2015–2017 Rank | 2014–2016 Rank | Facility | 2015–2017 Violations | 2014–2016 Violations |
|-----------------------|-----------------------|-------------------------|-----------------------------|-----------------------------|
| 1 | 1 | Inkom | 185 | 194 |
| 2 | 4 | Hagerman | 125 | 88 |
| 3 | 2 | Driggs | 124 | 135 |
| 4 | 3 | Plummer | 94 | 105 |
| 5 | 6 | Wilder | 77 | 59 |
| 6 | 10 | Genesee | 63 | 47 |
| 7 | 5 | Nezperce | 51 | 67 |
| 8 | 14 | Council | 46 | 35 |
| 9 | 12 | Ahsahka Water and Sewer | 44 | 42 |
| 10 | 21 | Kendrick | 39 | 24 |

CONCLUSIONS

Idahoans feel very strongly about their right to clean water for drinking, fishing and swimming. Municipal wastewater treatment plants are really the front line for protecting water quality and human health. Properly built, operated and maintained, sewage treatment plants are critical for keeping our rivers and lakes fishable and swimmable. Yet just 17.5% of the sewage treatment plants reviewed for this report are operating without violating their pollution discharge limits.

Each wastewater treatment plant has a unique permit, specifically developed using information about the facility and the conditions of the waterbody into which the facility discharges. Since the goal of these NPDES permits is to ensure that the operation of the facility does not pose a risk to the health of people swimming and fishing downstream, a permit violation means that the facility is endangering people and harming the environment. Violations are serious — and can result in significant financial penalties and enforcement actions.

Unfortunately, 94 facilities received failing grades. These facilities reported 1,742 water quality violations that jeopardized Idaho's drinking water, public health, and fisheries.



We commend facilities that protect water for aquatic life, public health and recreation. / Lana Weber

Most Sewage Treatment Plants in Idaho Are Not Making the Grade

There is a wide variation in the number of violations that facilities reported. Some facilities reported very few violations. At the other end of the spectrum, several facilities reported well over 100 violations. Facilities reporting violations need to carefully evaluate the causes for their violations and then identify and implement solutions.

ICL praises the 20 facilities that received passing grades for complying with their NPDES permits in the study period. Those facilities deserve to be commended for protecting water that is vital for aquatic life, public health and recreation.

NEXT STEPS

ICL takes these violations very seriously. One of the purposes of this report is to remind facilities that it is a violation of the Clean Water Act to discharge pollution from wastewater treatment plants at levels that exceed their permitted limits. If your community's wastewater treatment plant received a failing grade in this report — especially if your community reported more than 10 violations — your local sewage treatment plant could find itself charged with violating the Clean Water Act.

No municipality wants to be on the receiving end of a Clean Water Act citizen enforcement case. Bringing in lawyers and ending up in court and then having to pay penalties can be very costly. The way to avoid this situation is to instead prioritize efforts to ensure that a facility is operated and maintained to meet its permit limits. A community may need to invest additional money in equipment or upgrades. This is money well spent if it serves the dual purpose of protecting human health and water quality and avoiding inevitable litigation.



Money is well spent if it protects human health and water quality. / Scott Knickerbocker

Facilities that are violating their permits, especially those facilities that stand out as having frequent violations, are at grave risk of enforcement actions in the coming years. Indeed, ICL will soon initiate enforcement

actions against many of the facilities noted in this report. We encourage these communities to carefully review their facilities' performance and ensure that they are taking the necessary steps to bring them into compliance with their permits.

WHAT YOU CAN DO

This report is intended for a variety of audiences — from community members to locally elected officials. The actions you can take depend on your role in the community. Regardless of your role, start by educating yourself about the wastewater treatment plant in your community or one that discharges into a river or lake where you and your family fish and swim.



Educate yourself about wastewater discharge in your favorite lakes and streams. / Angel Hart

- Review the municipal wastewater treatment plant's NPDES permit. These documents, as well as the fact sheets that provide greater

detail and explain the permit conditions, can be accessed online:
www.epa.gov/npdes-permits/idaho-npdes-permits

- Visit the EPA's Enforcement and Compliance History Online website to review the performance of your local facility: echo.epa.gov/

If You Live in a Community with Zero Violations...

- Contact your local elected officials and thank them. Having a well-run facility is no accident. Chances are your local city council has made key decisions — such as allocating financial resources and staffing — that reflect the importance of protecting your local water quality.
- Consider writing a letter, or better yet, go to a city council meeting and say thank you.

If You Live in a Community with Violations...

- Contact your local elected officials and tell them that you are concerned. Better yet, bring a copy of this report to a city or town council meeting and raise your concerns directly to your elected officials.
- Tell them that you are concerned because you want your community's wastewater treatment plant to be part of protecting water quality — not harming it.
- Also tell them that you are concerned that the violations at your sewage plant are a huge financial liability for the community. Fines of up to \$51,570 per violation per day could be very hard on your town. It would be much better for this money to be invested in fixing the problem instead of a lawsuit.

If You're an Elected Official in a Community with Violations...

It is probably safe to say that no town councilors or mayors want their wastewater treatment plants to pollute. Perhaps you didn't know that your facility was violating the law. Or perhaps you knew that it was racking up violations, but you didn't realize that this behavior was not the norm. Or perhaps you didn't realize that your violations placed your community at huge financial risk.

As an elected official, you have a responsibility to ensure that your community's facility is well run and complies with state and federal laws. This means that you need to be talking about this issue at council meetings and impressing on the operator of your facility that violations are unacceptable.

Some violations may indicate that your facility is not being operated correctly. Other violations may be the result of broken or old equipment

Most Sewage Treatment Plants in Idaho Are Not Making the Grade

that needs to be repaired or replaced. Eliminating violations may be as simple as paying better attention to how your plant is run — or it may require that your community prioritize increased funding for the facility.

No matter the cause or the needed fix, the time to act is now.



Every Idahoan can take action to make sure our water is clean. / Justin Hayes

APPENDIX I

Alphabetical list of all 114 municipal wastewater treatment plans in Idaho that have NPDES permits, their pass or fail status, and their violations, if applicable.

| Facility | Violations | Grade | Pollutants |
|----------------------------------|------------|-------|---|
| Aberdeen | 6 | Fail | <i>E. coli</i> Solids, total suspended |
| Ahsahka Water and Sewer District | 44 | Fail | Chlorine <i>E. coli</i> |
| American Falls | 1 | Fail | <i>E. coli</i> |
| Ashton | 7 | Fail | Ammonia BOD, 5-day, 20 deg. C <i>E. coli</i> Solids, suspended percent removal Solids, total suspended |
| Blackfoot | 18 | Fail | BOD, 5-day, 20 deg. C <i>E. coli</i> Floating solids or foam Phosphorus Solids, suspended percent removal Solids, total suspended |
| Boise | 2 | Fail | <i>E. coli</i> Temperature, water deg. C |
| Boise | 1 | Fail | <i>E. coli</i> |
| Bonnars Ferry | 4 | Fail | pH |
| Bovill | 10 | Fail | BOD, 5-day, 20 deg. C <i>E. coli</i> Solids, total suspended |
| Buhl | 1 | Fail | Chlorine |
| Burley | 8 | Fail | Ammonia Coliform, fecal general <i>E. coli</i> Phosphorus |
| Caldwell | 2 | Fail | <i>E. coli</i> |
| Cambridge | 31 | Fail | BOD, 5-day, 20 deg. C BOD, 5-day, percent removal Solids, suspended percent removal Solids, total suspended pH |
| Carey | 0 | Pass | |
| Cascade | 0 | Pass | |
| Clarkia | 8 | Fail | Chlorine Solids, total suspended |
| Coeur d'Alene | 5 | Fail | <i>E. coli</i> Solids, total suspended |
| Cottonwood | 7 | Fail | BOD, 5-day, 20 deg. C Chlorine <i>E. coli</i> |
| Council | 46 | Fail | BOD, 5-day, 20 deg. C Chlorine <i>E. coli</i> Solids, suspended percent removal Solids, total suspended |

Most Sewage Treatment Plants in Idaho Are Not Making the Grade

| Facility | Violations | Grade | Pollutants |
|--|------------|-------|--|
| Craigmont | 32 | Fail | BOD, 5-day, 20 deg. C BOD, 5-day, percent removal Chlorine <i>E. coli</i> Solids, suspended percent removal Solids, total suspended pH |
| Culdesac | 35 | Fail | Chlorine <i>E. coli</i> |
| Deary | 23 | Fail | BOD, 5-day, 20 deg. C <i>E. coli</i> Solids, total suspended pH |
| Dover | 0 | Pass | |
| Driggs | 124 | Fail | Ammonia BOD, 5-day, 20 deg. C <i>E. coli</i> Solids, suspended percent removal |
| Eastern Idaho Regional Wastewater Authority - Oxbow WWTP | 4 | Fail | Phosphorus |
| Elk City Water and Sewer Association | 25 | Fail | BOD, 5-day, percent removal Chlorine <i>E. coli</i> Solids, suspended percent removal Temperature, water deg. C pH |
| Elk River | 20 | Fail | BOD, 5-day, percent removal Chlorine <i>E. coli</i> pH |
| Emida | 0 | Pass | |
| Emmett | 3 | Fail | Coliform, fecal general <i>E. coli</i> Solids, total suspended |
| Fairfield | 10 | Fail | BOD, 5-day, 20 deg. C BOD, 5-day, percent removal <i>E. coli</i> Solids, suspended percent removal Solids, total suspended pH |
| Filer | 0 | Pass | |
| Firth | 17 | Fail | BOD, 5-day, 20 deg. C BOD, 5-day, percent removal Phosphorus Solids, suspended percent removal Solids, total suspended |
| Franklin | 18 | Fail | BOD, 5-day, 20 deg. C Chlorine <i>E. coli</i> Solids, total suspended |
| Fruitland | 13 | Fail | BOD, 5-day, 20 deg. C BOD, 5-day, percent removal <i>E. coli</i> Solids, suspended percent removal Solids, total suspended pH |
| Fruitland | 7 | Fail | BOD, 5-day, 20 deg. C Phosphorus Solids, suspended percent removal Solids, total suspended |

Most Sewage Treatment Plants in Idaho Are Not Making the Grade

| Facility | Violations | Grade | Pollutants |
|----------------|------------|-------|--|
| Genesee | 63 | Fail | Ammonia BOD, 5-day, 20 deg. C BOD, 5-day, percent removal Chlorine <i>E. coli</i> Solids, suspended percent removal Solids, total suspended pH |
| Georgetown | 0 | Pass | |
| Glenns Ferry | 13 | Fail | BOD, 5-day, 20 deg. C BOD, 5-day, percent removal <i>E. coli</i> Solids, total suspended |
| Gooding | 13 | Fail | Ammonia Coliform, fecal general |
| Grace | 0 | Pass | |
| Grangeville | 1 | Fail | Solids, suspended percent removal |
| Greenleaf | 1 | Fail | <i>E. coli</i> |
| Hagerman | 125 | Fail | BOD, 5-day, 20 deg. C BOD, 5-day, percent removal Chlorine <i>E. coli</i> Solids, suspended percent removal Solids, total suspended pH |
| Hailey | 6 | Fail | Ammonia <i>E. coli</i> |
| Hansen | 7 | Fail | Chlorine <i>E. coli</i> Solids, total suspended |
| Harrison | 1 | Fail | BOD, 5-day, 20 deg. C |
| Hayden | 1 | Fail | Zinc |
| Heyburn | 32 | Fail | Coliform, fecal general <i>E. coli</i> Phosphorus Solids, suspended percent removal Solids, total suspended |
| Homedale | 32 | Fail | BOD, 5-day, 20 deg. C BOD, 5-day, percent removal Chlorine <i>E. coli</i> Phosphorus Solids, suspended percent removal Solids, total suspended pH |
| Horseshoe Bend | 22 | Fail | Solids, suspended percent removal Solids, total suspended pH |
| Idaho Falls | 3 | Fail | Ammonia <i>E. coli</i> |
| Inkom | 185 | Fail | BOD, 5-day, 20 deg. C BOD, 5-day, percent removal Chlorine <i>E. coli</i> Nitrogen Phosphorus Solids, suspended percent removal Solids, total suspended pH |
| Jerome | 1 | Fail | Phosphorus |
| Juliaetta | 2 | Fail | pH |
| Kamiah | 1 | Fail | Solids, total suspended |

Most Sewage Treatment Plants in Idaho Are Not Making the Grade

| Facility | Violations | Grade | Pollutants |
|--------------------------------------|------------|-------|--|
| Kendrick | 39 | Fail | BOD, 5-day, 20 deg. C BOD, 5-day, percent removal Chlorine <i>E. coli</i> Solids, suspended percent removal Solids, total suspended pH |
| Ketchum | 1 | Fail | Copper |
| Kooskia | 3 | Fail | BOD, 5-day, 20 deg. C pH |
| Kootenai-Ponderay | 0 | Pass | |
| Kuna | 5 | Fail | Ammonia Phosphorus |
| Lava Hot Springs | 0 | Pass | |
| Lewiston | 0 | Pass | |
| Mackay | 1 | Fail | BOD, 5-day, percent removal |
| Marsing | 9 | Fail | BOD, 5-day, 20 deg. C <i>E. coli</i> Solids, total suspended |
| McCall | 0 | Pass | |
| Meridian | 2 | Fail | Coliform, fecal general |
| Middleton | 2 | Fail | pH |
| Montpelier | 8 | Fail | BOD, 5-day, 20 deg. C BOD, 5-day, percent removal Chlorine Solids, suspended percent removal Solids, total suspended |
| Moscow | 3 | Fail | Oxygen |
| Mountain Home | 0 | Pass | |
| Nampa | 3 | Fail | <i>E. coli</i> |
| New Meadows | 9 | Fail | Chlorine Phosphorus Solids, total suspended |
| New Plymouth | 0 | Pass | |
| Nez Perce Tribe - Lapwai Valley WWTP | 0 | Pass | |
| Nezperce | 51 | Fail | BOD, 5-day, 20 deg. C BOD, 5-day, percent removal <i>E. coli</i> Solids, suspended percent removal Solids, total suspended pH |
| Notus | 21 | Fail | Ammonia BOD, 5-day, 20 deg. C <i>E. coli</i> Solids, total suspended pH |
| Orofino | 5 | Fail | Chlorine pH |
| Parma | 13 | Fail | BOD, 5-day, percent removal Chlorine <i>E. coli</i> Solids, suspended percent removal Solids, total suspended |
| Payette | 0 | Pass | |

Most Sewage Treatment Plants in Idaho Are Not Making the Grade

| Facility | Violations | Grade | Pollutants |
|------------------------------------|------------|-------|--|
| Pierce | 26 | Fail | BOD, 5-day, 20 deg. C BOD, 5-day, percent removal Chlorine <i>E. coli</i> Solids, suspended percent removal Solids, total suspended |
| Plummer | 94 | Fail | Ammonia BOD, 5-day, 20 deg. C BOD, 5-day, percent removal <i>E. coli</i> Phosphorus Solids, suspended percent removal Solids, total suspended pH |
| Pocatello | 8 | Fail | Ammonia <i>E. coli</i> |
| Post Falls | 9 | Fail | Phosphorus |
| Potlatch | 9 | Fail | BOD, 5-day, 20 deg. C Solids, total suspended pH |
| Preston | 24 | Fail | Ammonia BOD, 5-day, 20 deg. C BOD, 5-day, percent removal <i>E. coli</i> Oxygen Solids, total suspended |
| Priest River | 21 | Fail | BOD, 5-day, 20 deg. C <i>E. coli</i> Solids, total suspended pH |
| Rexburg | 1 | Fail | pH |
| Richfield | 24 | Fail | Chlorine <i>E. coli</i> Solids, suspended percent removal Solids, total suspended pH |
| Rigby | 2 | Fail | BOD, 5-day, 20 deg. C |
| Riggins | 0 | Pass | |
| Ririe | 8 | Fail | BOD, 5-day, 20 deg. C BOD, 5-day, percent removal Solids, suspended percent removal Solids, total suspended |
| Riverside Water and Sewer District | 2 | Fail | BOD, 5-day, percent removal <i>E. coli</i> Solids, suspended percent removal |
| Roberts | 0 | Pass | |
| Rockland | 0 | Pass | |
| Salmon | 1 | Fail | <i>E. coli</i> |
| Sandpoint | 19 | Fail | BOD, 5-day, 20 deg. C BOD, 5-day, percent removal Chlorine <i>E. coli</i> Solids, suspended percent removal Solids, total suspended pH |
| Santa Fernwood | 3 | Fail | Solids, suspended percent removal pH |
| Shoshone | 6 | Fail | BOD, 5-day, 20 deg. C Chlorine <i>E. coli</i> |
| Smelterville | 21 | Fail | Ammonia BOD, 5-day, 20 deg. C <i>E. coli</i> Lead Solids, total suspended |
| Soda Springs | 1 | Fail | Solids, suspended percent removal |

Most Sewage Treatment Plants in Idaho Are Not Making the Grade

| Facility | Violations | Grade | Pollutants |
|---|------------|-------|--|
| South Fork Coeur d'Alene River Sewer District - Mullan WWTP | 12 | Fail | Cadmium <i>E. coli</i> Lead Zinc |
| South Fork Coeur d'Alene Sewer District - Page WWTP | 31 | Fail | Ammonia Cadmium <i>E. coli</i> Solids, total suspended Zinc |
| St Anthony | 7 | Fail | Chlorine <i>E. coli</i> Solids, total suspended pH |
| St Maries | 9 | Fail | BOD, 5-day, percent removal Chlorine <i>E. coli</i> pH |
| Star | 0 | Pass | |
| Tensed | 5 | Fail | Chlorine |
| Troy | 23 | Fail | BOD, 5-day, 20 deg. C <i>E. coli</i> Solids, total suspended |
| Twin Falls | 5 | Fail | <i>E. coli</i> Solids, total suspended |
| Viola | 0 | Pass | |
| Weippe | 17 | Fail | BOD, 5-day, percent removal Chlorine <i>E. coli</i> Floating solids or foam Solids, suspended percent removal pH |
| Weiser | 1 | Fail | Phosphorus |
| Wilder | 77 | Fail | BOD, 5-day, 20 deg. C BOD, 5-day, percent removal Chlorine <i>E. coli</i> Solids, suspended percent removal Solids, total suspended pH |
| Winchester | 27 | Fail | Ammonia Chlorine <i>E. coli</i> Floating solids or foam Oil and grease Solids, suspended percent removal Solids, total suspended |
| Worley | 33 | Fail | Ammonia BOD, 5-day, 20 deg. C BOD, 5-day, percent removal Solids, suspended percent removal Solids, total suspended |